

## Transaction Information

Tool ID	MCIMP-10
Tool Status	Connected
Location	Singapore
Wafer Size	200 mm
Fab Section	Implant
Tool Available Date	2024-12-31

## General Product Information

Vendor Supplier	Applied Materials South East Asia Pte. Ltd
Model	E500 EHP
Vintage	2007
Serial No	ES193877
Asset Description	F067PE0629M0X07
Software Version	13.42.18
CIM	GEM and SECS
Process	ION IMPLANTATION SYSTEM

## Hardware Configuration (Fab)

System Type	Description	Quantity	Status
Main System	Main Unit	1	
Others			
Handler System	Endstation PP+ with both LOADLOCK	1	
Options System			
Factory Interface	SMIF	0	OK

## Hardware Configuration (Subfab / Auxilliary Units)

Description	Quantity	Status
scrubber Exhaust	1	OK
Load lock rough pump	1	OK

## Missing/Faulty Parts / Accesories List

Description	Quantity
Analyzer turbo pum	1
Load lock rough pump	1
Load lock rough pump	1
source rough pump	1
source turbo pump	1
LHS and RHS turbo pump	2
Scroll pump	1
Beamline turbo pump	1

## Tool Pictures

General

main machine



Hardware Fab

Endstation with PP+ on both  
LOADLOCK



Hardware Sub-fab

Scrubber and LL rough pump



Hardware Sub-fab

Scrubber and LL rough pump



Manufacture Serial

SERIAL NUMBER PLATE

# ION IMPLANTATION SYSTEM

Model

ES500 EHP1

Serial No.

ES193877

Manufactured

JULY 2007

## Facility Requirements

Electrical 208 Volts 3 Phase 5 Wire 43.2 KVA 120 FLA  
50/60 Hertz 75A Max. Sgl. Load

Main CB 200 A 19 KA AIC

CVCF CB A AIC

A Max. Sgl. Load

Power Distribution Schematic E91059900

Max. Beam Energy 250 KV

Water	Inlet Press.	60-150 psi (min./max.)	413.7-1034.2 kPa
	Press. Drop	56 psi	386.1 kPa
	Flow Rate	10 gpm (min.)	37.9 l/m
	Inlet Temp.	40-70 F (min./max.)	4-21 C
Nitrogen	Press.	40-150 psi (min./max.)	137.9-1034.2 kPa
Air	Press.	100-150 psi (min./max.)	689.4-1034.2 kPa
Exhaust	Flow Rate	230 cfm (min.)	108.5 m <sup>3</sup> /min
	Press. Drop	-1.5 in H <sub>2</sub> O	-373.36 Pa
Weight		31,500 lbs	14,318 kg

Installation Drawing E91000020  
Overcurrent Protection Provided At Machine  
Supply Terminals

35 dory road / gloucester, ma 01930

Made in U.S.A.

**varian** <sup>VA</sup>  
ion implant systems

Missing Parts

missing part item.





Missing Parts

missing part item.



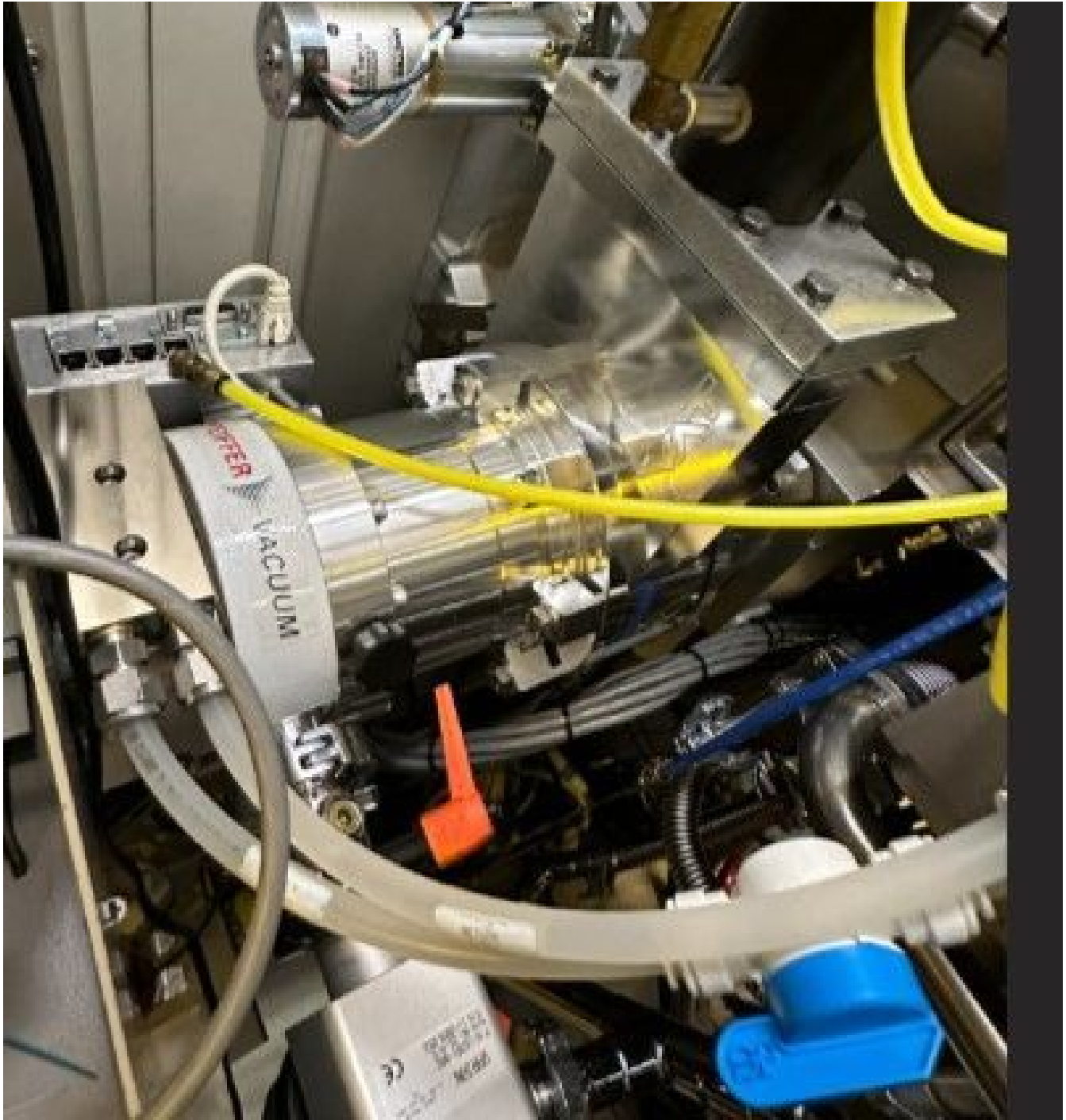
Missing Parts

missing part item.



Missing Parts

missing part item.



Missing Parts

missing part item.



Missing Parts

missing part item.



Missing Parts

missing part item.



## Additional Tool Data Files