

Transaction Information

Tool ID	SRD2-05
Tool Status	Disconnected
Location	Woodlands, Singapore
Wafer Size	200 mm
Fab Section	Clean
Tool Available Date	2024-07-09

General Product Information

Vendor Supplier	VERTEQ
Model	1800
Vintage	1995
Serial No	35690C
Asset Description	SRD Dryer
Software Version	NA
CIM	NONE
Process	Dryer

Hardware Configuration (Fab)

System Type	Description	Quantity	Status
Main System	Main System	1	
Handler System	NA		
Options System			

Hardware Configuration (Subfab / Auxilliary Units)

Description	Quantity	Status
NONE		

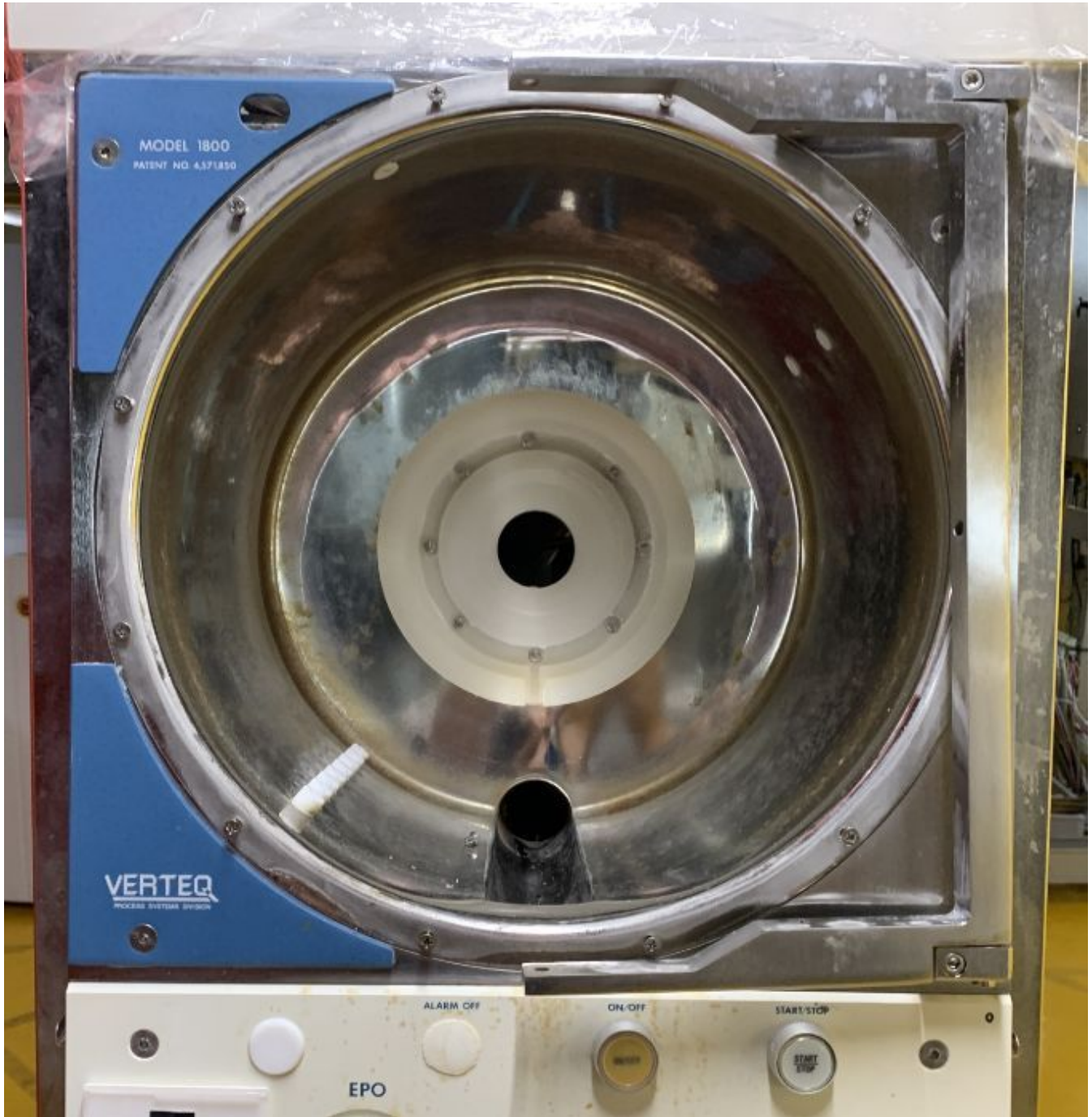
Missing/Faulty Parts / Accesories List

Description	Quantity
Motor	1
rotor	1
Controller	1
Com board	1

Tool Pictures

General

NONE



Manufacture Serial

Serial number plate

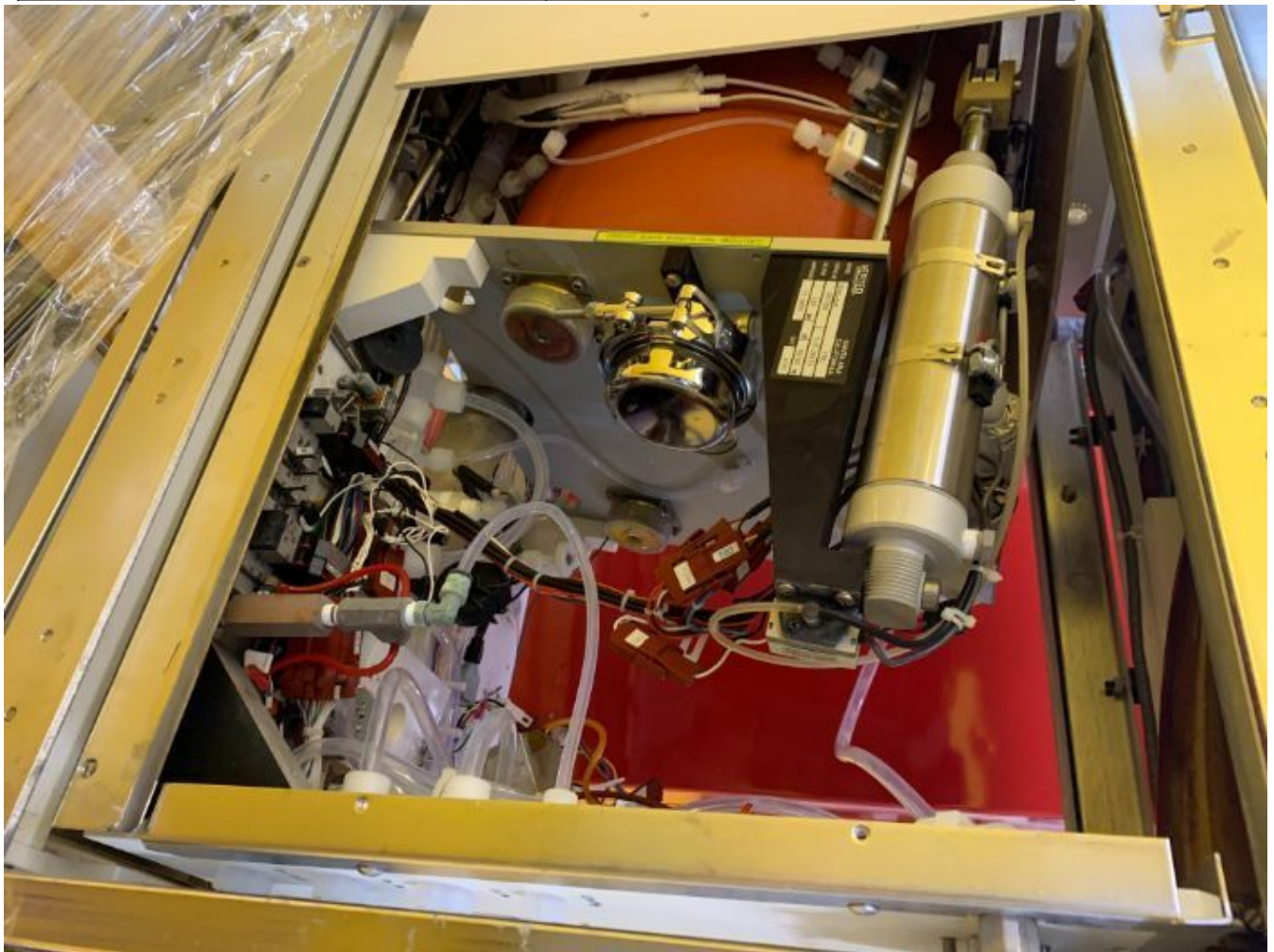
WARNING: Risk of electric shock. Disconnect power before servicing. Refer to qualified personnel for servicing.

CAUTION: 120 VAC. Refer servicing to servicing personnel

VERTIQ		SANTA ANA CALIFORNIA	
MODEL	1800-6AR	1YR.	
SERIAL NO.	35690C	S.O. 35690	
SPLY VOLTAGE	120 VAC	1 Ø	50/60 Hz
FL CURRENT	15AMP	MOTOR RATING	160VDC, 8A
MAIN CB A1C	NONE	ELECT DIAG	1070811.1

Missing Parts

NONE



Additional Tool Data Files