

## Transaction Information

Tool ID	DPGN-01
Tool Status	Warehouse
Location	Singapore
Wafer Size	200 mm
Fab Section	Diffusion
Tool Available Date	2023-08-30

## General Product Information

Vendor Supplier	AMAT
Model	Centura TPCC XE+ RP
Vintage	2000
Serial No	331590
Asset Description	AMAT Centura TPCC XE+ RP AB: Gate-ox (DPN+RTO);C:Singen Spacer
Software Version	B6.5
CIM	SECS
Process	AB: Gate-Ox (DPN + RTO); C:Singen Spacer

## Hardware Configuration (Fab)

System Type	Description	Quantity	Status
Main System	Process Chamber Position A, XEplus Toxic RP	1	OK
Main System	Process Chamber Position B, DN - DPN	1	OK
Main System	Process Chamber Position C, SN - Singen	1	OK
Factory Interface	SMIF	0	OK

## Hardware Configuration (Subfab / Auxilliary Units)

Description	Quantity	Status
Pumps	5	OK
Heat Exchanger (SMC)	1	OK
Heat Exchanger (Steelhead)	2	OK

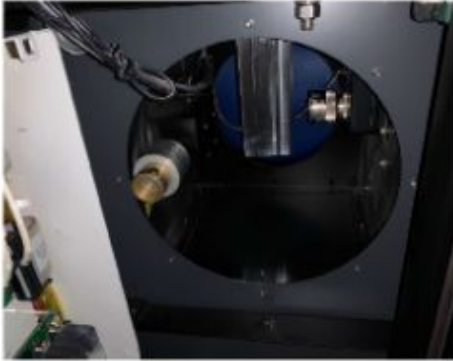
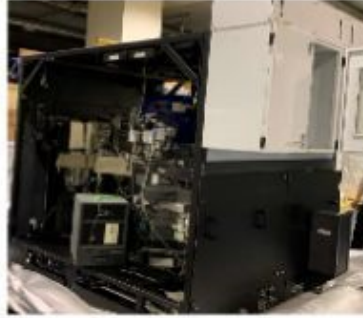
## Missing/Faulty Parts / Accesories List

Description	Quantity
NONE	

# Tool Pictures

General

Mainframe



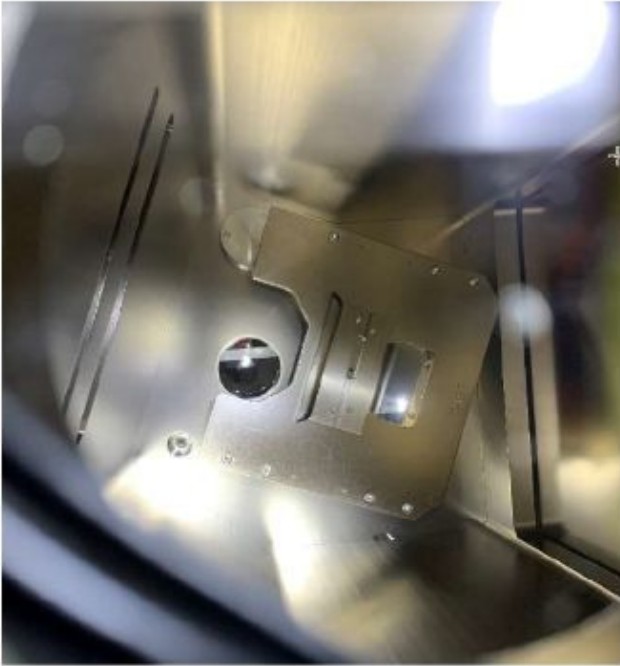
## H. SYSTEM CONTROLLER



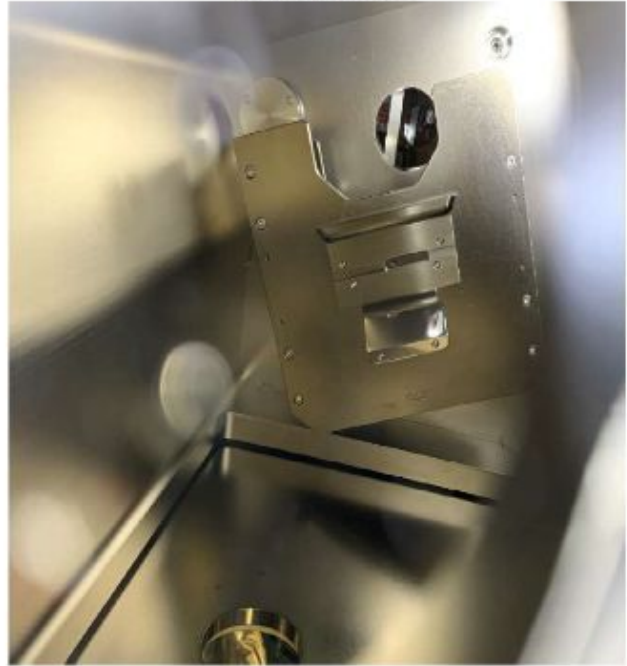
## F. GAS PANEL



Load Lock A



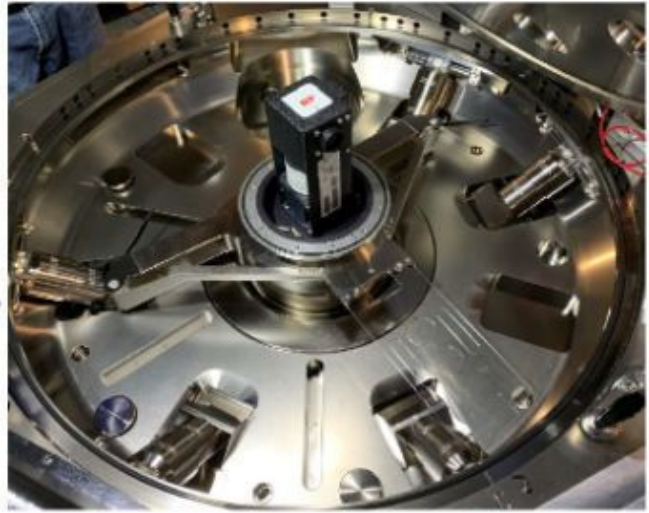
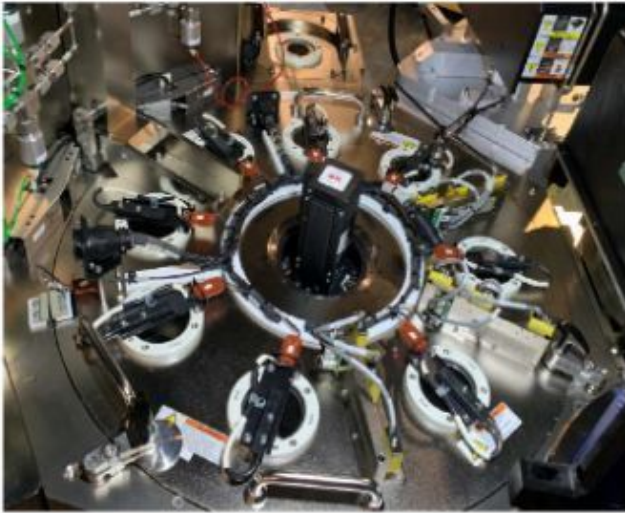
Load Lock B



# CHAMBER A (RTP-XE PLUS TOXIC)



### C. TRANSFER CHAMBER

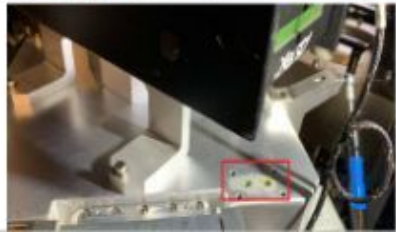
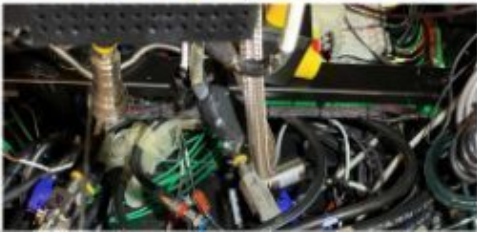
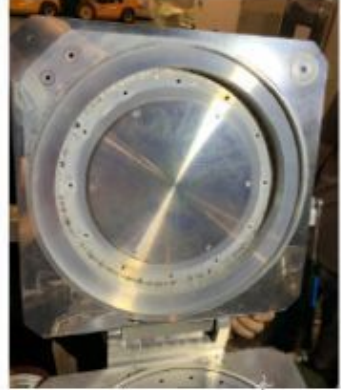
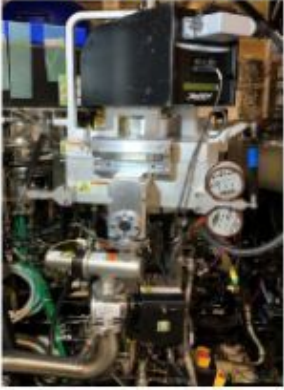




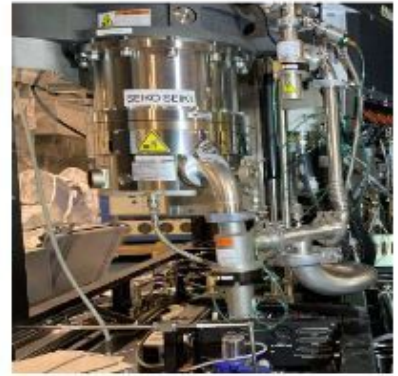
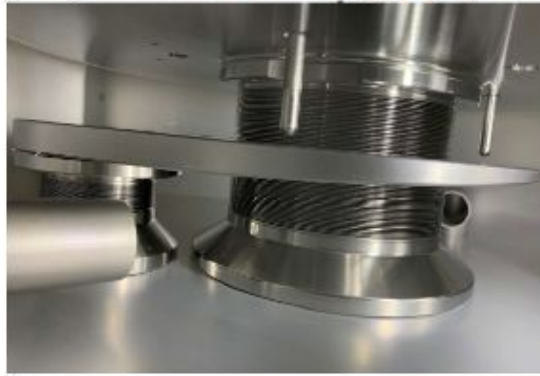
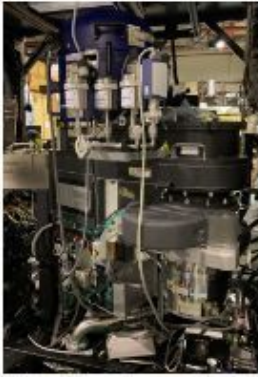
Hardware Fab

chambers

Chamber C SINGEN



### E. CHAMBER B (DPN)



# I. REMOTE COMPONENTS



Manufacture Serial

SN Plate

DPGN-01

 **APPLIED MATERIALS**  
9700 HWY 290 EAST, AUSTIN, TX 78724

OVERCURRENT PROTECTION PROVIDED AT MACHINE SUPPLY TERMINALS.

MODEL: CENTURA **TPCC**

SERIAL NO: **331590**

---

VOLTAGE: **268VAC** \* WIRES: **FOUR** PHASE: **3Ø/2L\***

FULL-LOAD CURRENT: **500A** FREQUENCY: **50/60Hz**

MAXIMUM SYSTEM RATING: **400A**

AMPERE RATING OF LARGEST LOAD: **250A**

INTERRUPTING CURRENT: **10,000** AMPS LC

YEAR OF CONSTRUCTION: **2009**

DIAGRAM NUMBER: **0180 76114** 10065-0013 REV. 10

**4** HAZARD OF ELECTRICAL SHOCK. ALWAYS DEENERGIZE.

\* This equipment must be installed and serviced only by qualified personnel.

\* Turn off all power supplies. For equipment safety, always use proper equipment.

\* Always use proper safety practices when working on this equipment.

\* Always use proper safety practices when working on this equipment.

\* Always use proper safety practices when working on this equipment.

 **WARNING**  
HIGHER VOLTAGE  
Contact may cause  
electric shock or death.  
Type of 2 1/2 in. x 2  
power button marking.

## Additional Tool Data Files